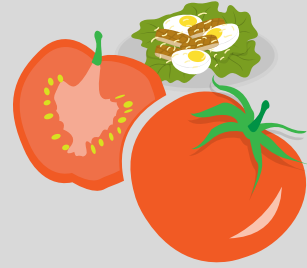


# NUTRITION INTERVENTIONS



- **Community-Based Management of Acute Malnutrition (CMAM)**
- **Growth Monitoring and Promotion**
- **Infant and Young Child Feeding (IYCF)**
- **Nutrition -Friendly Schools Initiative (NFSI) Programme**
- **Vitamin A Supplementation**
- **BreastFeeding Campaign**
- **Orientation for Food Vendors and School Feeding Caterers**
- **Pregnancy and Post Natal Care**
- **Personal Hygiene Promotion**
- **Waste Management Practices**

